



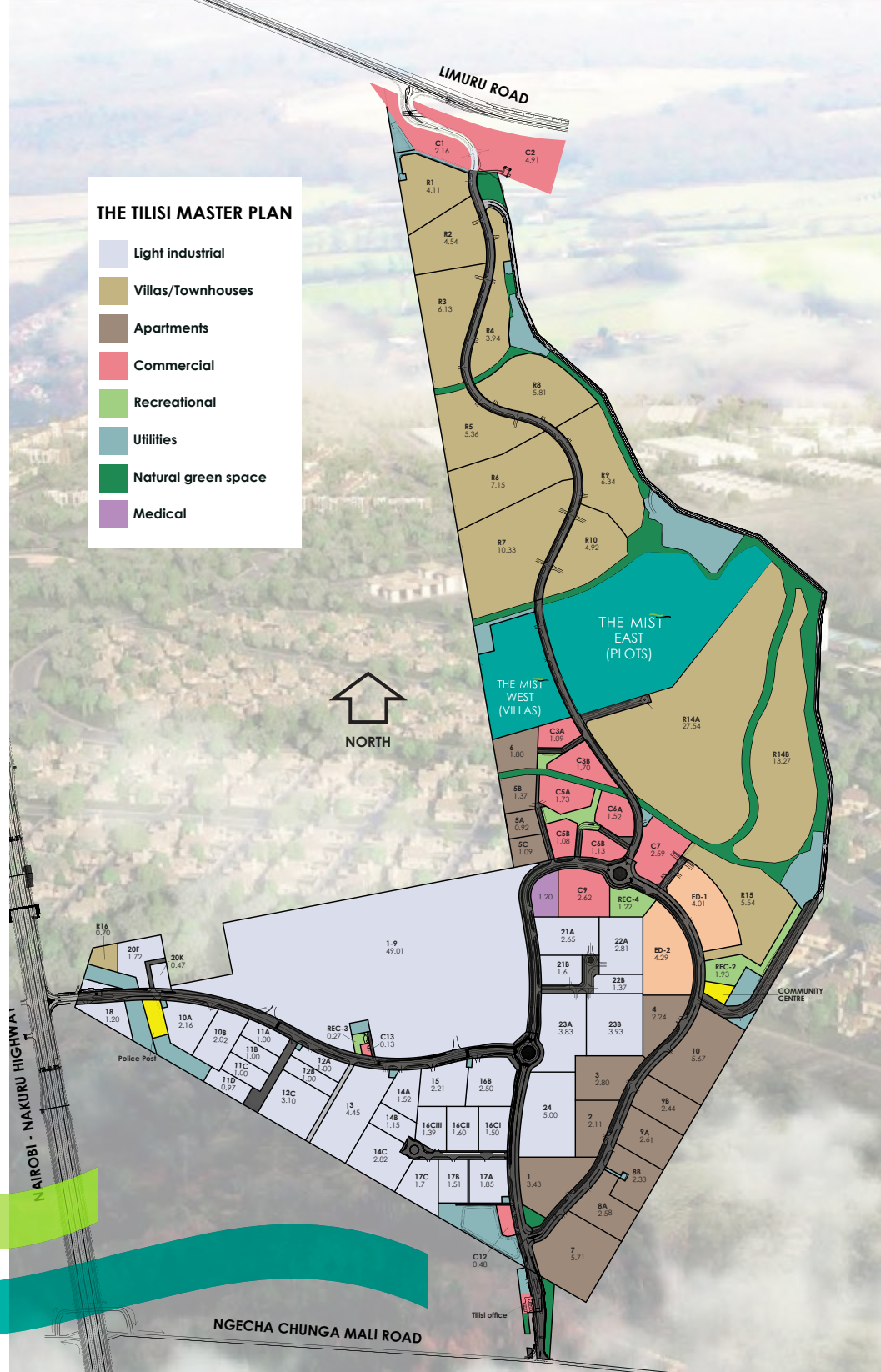
# THE MIST

@ T I L I S I

By CHIGWELL 

## About Tilisi

Tilisi is a mixed-use development fusing logistics and light industrial, residential, educational, medical, recreational, hospitality, commercial and retail uses, ultimately offering an all encompassing corporate and community experience.



## Tranquility

### BEGINS AT THE MIST

Seamlessly blending into its beautiful natural surroundings, The Mist fuses nature and modernity to create an unmatched living experience.

The Plots are set up against a beautiful countryside backdrop, ideal for you to set up your Dream Home or multiple units for rental investment.



# THE MIST EAST LAYOUT



## Boundless SERENITY

The Mist presents fully serviced Quarter (1/4) Acre residential plots curated to give you an exquisite experience that blends the expansive green undulating landscapes coupled with the revitalizing freshness of mother nature.

### ESTATE AMENITIES



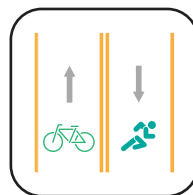
Clubhouse



Swimming  
Pool



Gym  
Rooms



Jogging tracks &  
cycling lanes  
within Tilisi



Basketball  
Court

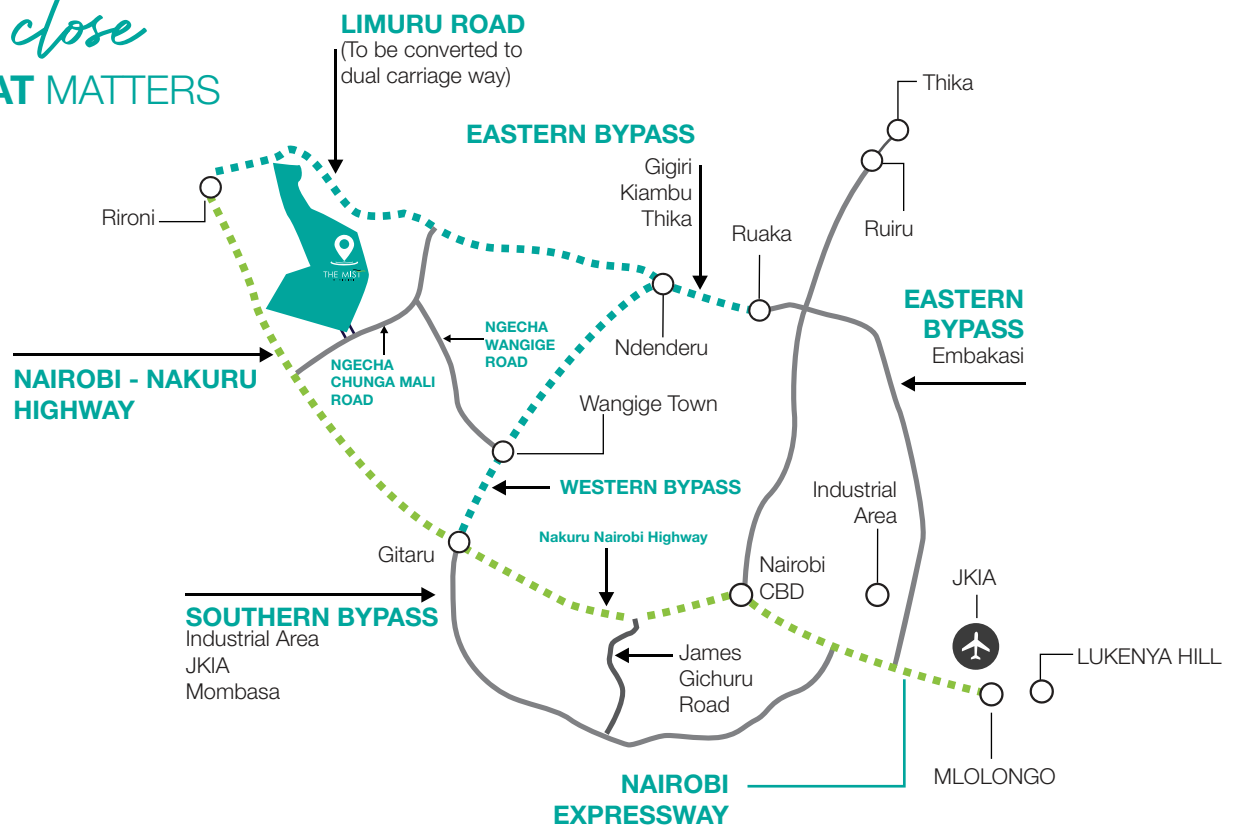


5 Aside Football  
Pitch



Epitome of Urban living

*we are close*  
TO ALL THAT MATTERS



Infrastructure →



Water



Power



Roads



Sewer



Fibre Optic Cabling

#### CONTACT US:

Chigwell Holdings Ltd, 4<sup>th</sup> Floor, Makson Plaza, Parklands Road - Westlands  
Mobile: 0700 000 802 / 0731 888 111 | Email: [info@chigwell.co.ke](mailto:info@chigwell.co.ke) | Website : [www.chigwellholdings.com](http://www.chigwellholdings.com)

Particulars not warranted. Site image shown is for marketing purposes only. Estate amenities listed are for the entire project i.e The Mist Villas & The Mist Plots.