

THE MIST

@TILISI

By CHIGWELL





discover

THE BEAUTY OF NATURE
AT YOUR DOORSTEP

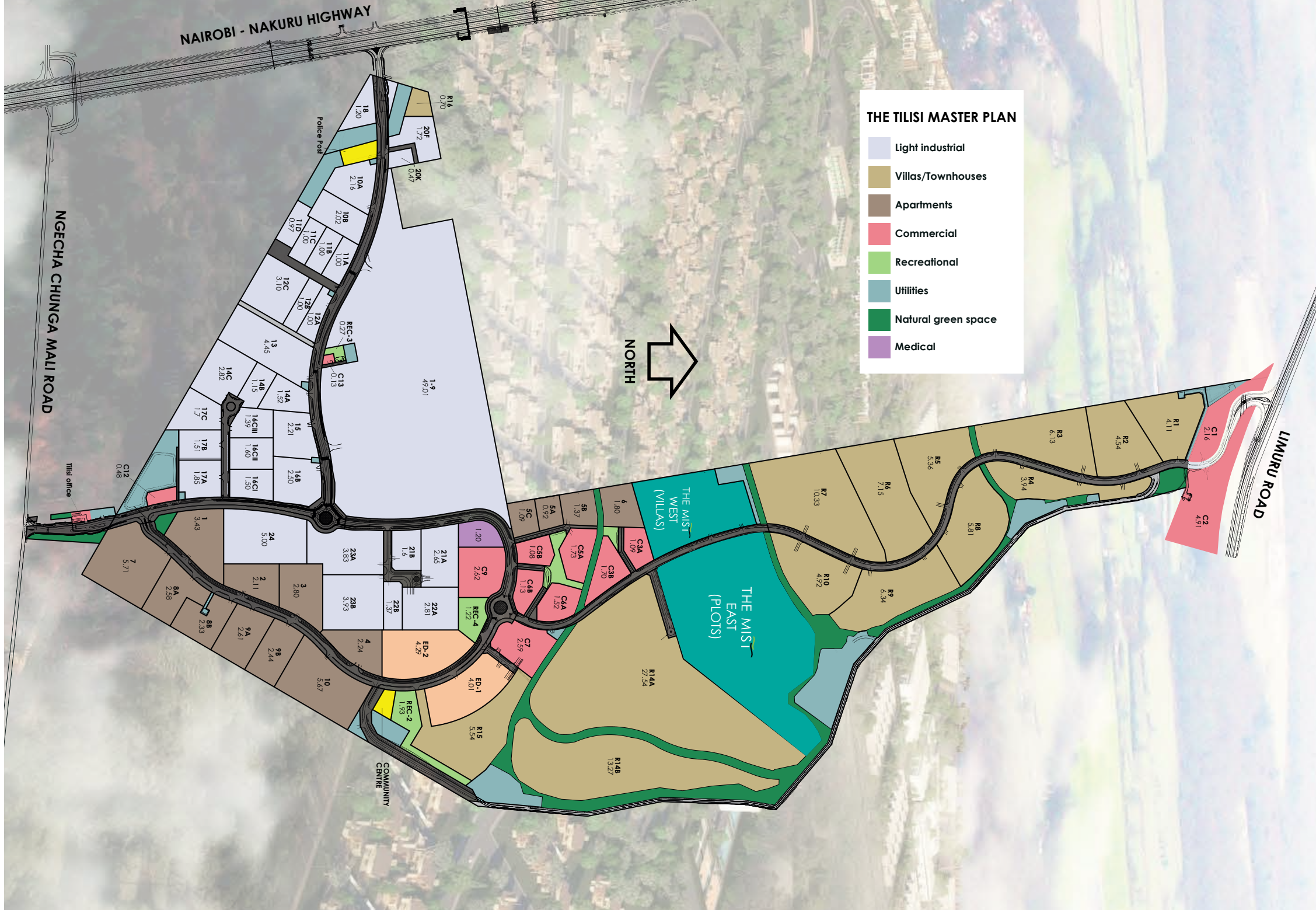
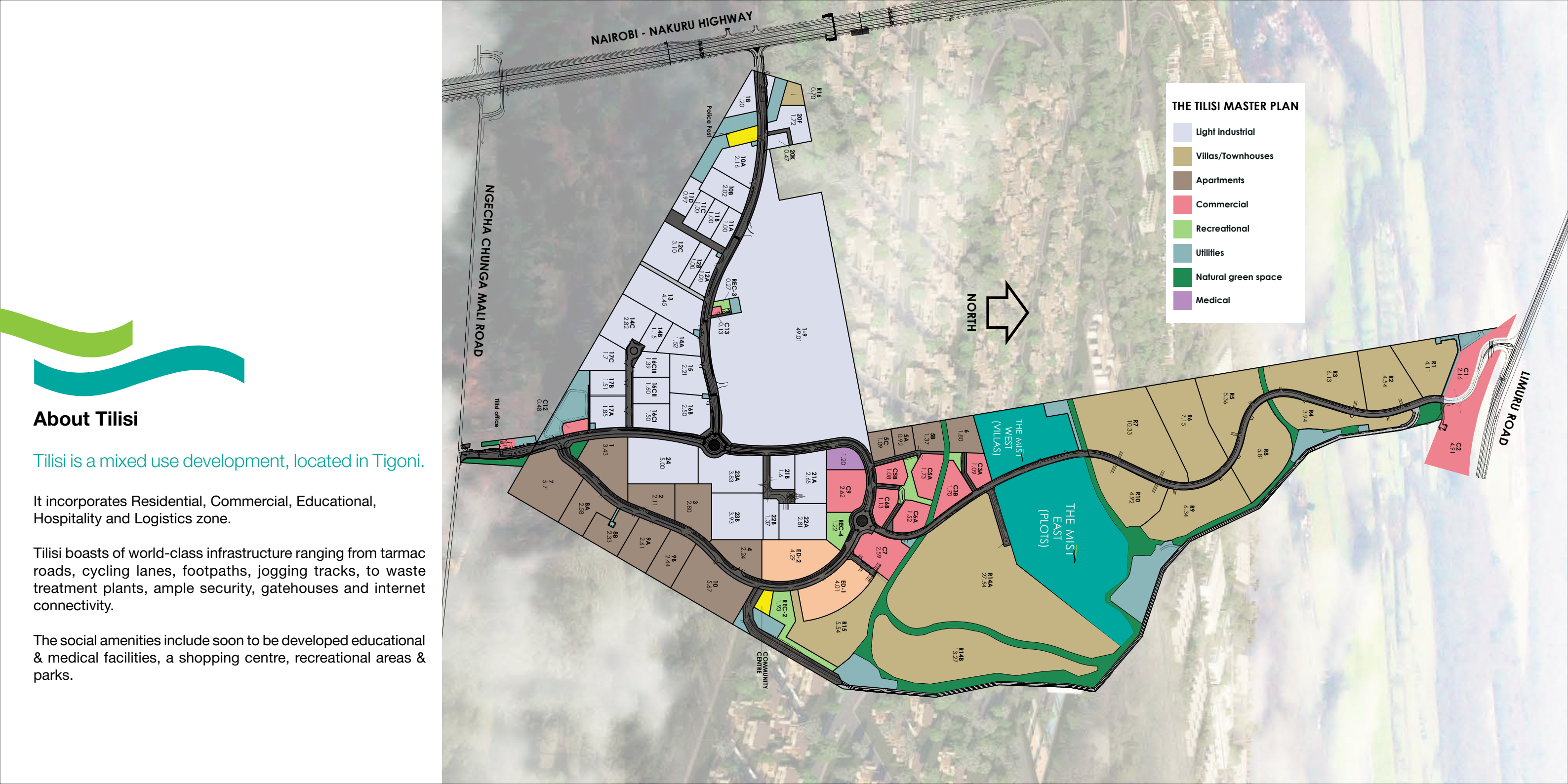
In the heart of Tigoni, a leafy highland area with cool climate all year round, a new dawn heralds.

In an area once lost in the mists of time but now brimming with endless opportunity, springs forth an exclusive development that fuses the convenience of city living and the tranquility of the countryside.

Set apart by boundless serenity and set out to be a breath of fresh air in contemporary modern living, The Mist is the perfect place to reside and nurtured your family.

Let nature serenade you and modernity captivate you as you enter The Mist.

Signifying a new dawn; breathe of new life from nature.



THE TILISI MASTER PLAN

- Light industrial
- Villas/Townhouses
- Apartments
- Commercial
- Recreational
- Utilities
- Natural green space
- Medical

About Tilisi

Tilisi is a mixed use development, located in Tigoni.

It incorporates Residential, Commercial, Educational, Hospitality and Logistics zone.

Tilisi boasts of world-class infrastructure ranging from tarmac roads, cycling lanes, footpaths, jogging tracks, to waste treatment plants, ample security, gatehouses and internet connectivity.

The social amenities include soon to be developed educational & medical facilities, a shopping centre, recreational areas & parks.



Tranquility **BEGINS AT THE MIST**

If a perfect world existed, The Mist would be it!

Seamlessly blending into its beautiful natural surroundings, The Mist is the perfect place to call home.

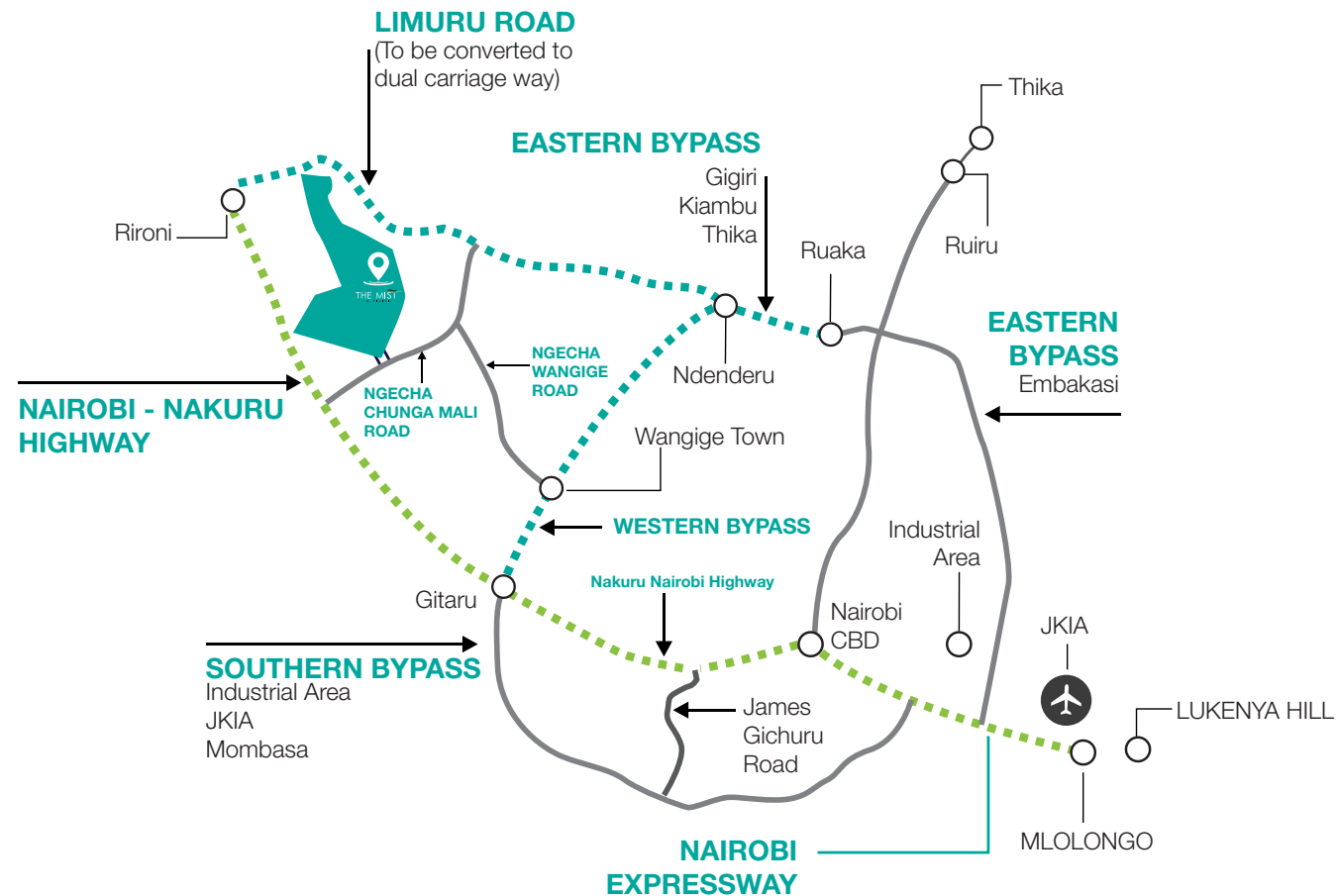
Tranquil in nature and private by design, The Mist perfectly fuses nature and modernity to create an unmatched living experience.

As part of the larger Tilisi mixed-use development, The Mist provides you with access to all the modern amenities of a city, set against a beautiful countryside backdrop.

we are close

TO ALL THAT MATTERS

The Mist is served by excellent infrastructure that will ensure you are in close proximity to all that is needed to offer you unparalleled convenience and peace of mind.



highlights OF OUR LOCATION

10

minutes
from Two Rivers

20

minutes
to Westlands

30

minutes
from CBD

40

minutes
to JKIA

Nearby social & basic amenities also include :

- Sigona and Limuru Golf Clubs
- Tigoni Waterfalls
- The Lake House, Tigoni
- St. Paul's University
- Tigoni Hospital
- Various Shopping Malls



Site LAYOUT

The Villas

The Mist is a modern residential housing development of 97no. Villas offering 6 distinct types of tastefully designed 3 & 4 bedroomed Villas plus DSQ.



UNITS LEGEND

Unit Type A
3 Bedroom
Standard

Unit Type B
3 Bedroom All
Ensuite

Unit Type C
3 Bedroom
Luxury

Unit Type D
4 Bedroom
Standard

Unit Type E
4 Bedroom
Standard

Unit Type F
4 Bedroom
Luxury

Estate Features

- Boreholes within Tilisi
- Solar Water heating
- CCTV Surveillance
- Intercom system
- Fibre Optic Cable
- Club House
- Gate house
- Cabro Paved driveways
- Landscaped gardens



experience

A DIFFERENT
LIFESTYLE

Amenities

- Club House
- Swimming Pool with changing rooms
- Gym room
- Jogging Tracks & Cycling Lanes within Tilisi
- Basketball Court
- 5 Aside Football Pitch



Project CONCEPT

The Mist is an architectural masterpiece with picturesque facade and communal amenities blending meticulously with 6 different types of 3 & 4 bedroom Villas crafted to offer a lavish living experience.

Surround yourself with undulating green spaces fusing nature and modernity in a tranquil Countryside environment.



TYPE A

STANDARD



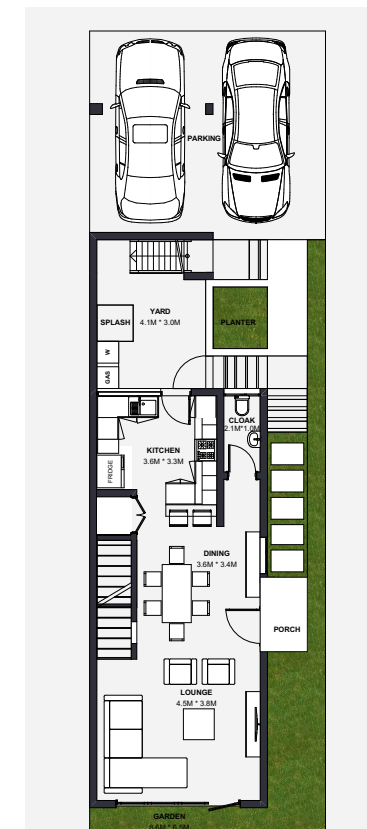
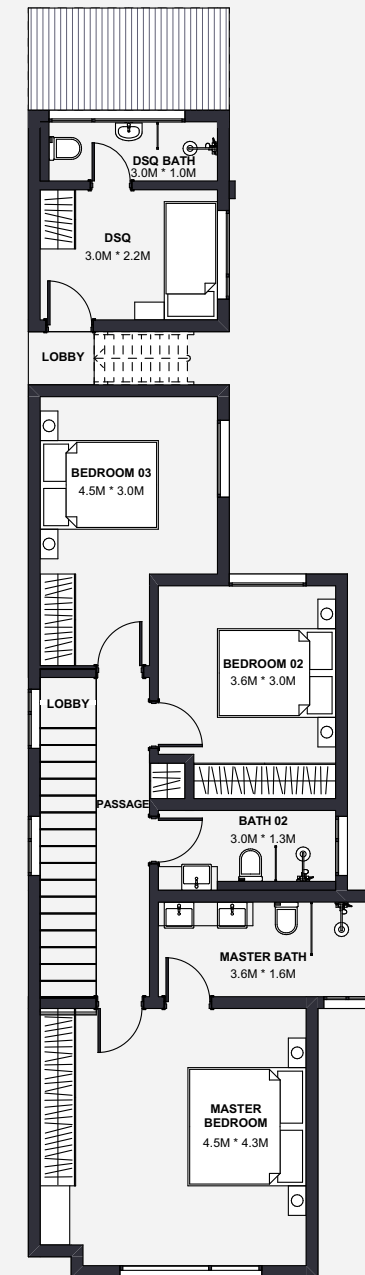
TYPE A (STANDARD)

3 bedroom + DSQ

Plinth Area 153 sq.m & Garden 53 sq.m

GROUND FLOOR

- Lounge with separate Dining area
- Semi fitted kitchen (Hob, Hood & Oven) with pantry
- Visitors cloak room
- Laundry Yard
- Private Parking for 2 cars
- Private backyard garden



FIRST FLOOR

- Bedroom 02 & 03 sharing
- Master ensuite
- Self contained DSQ

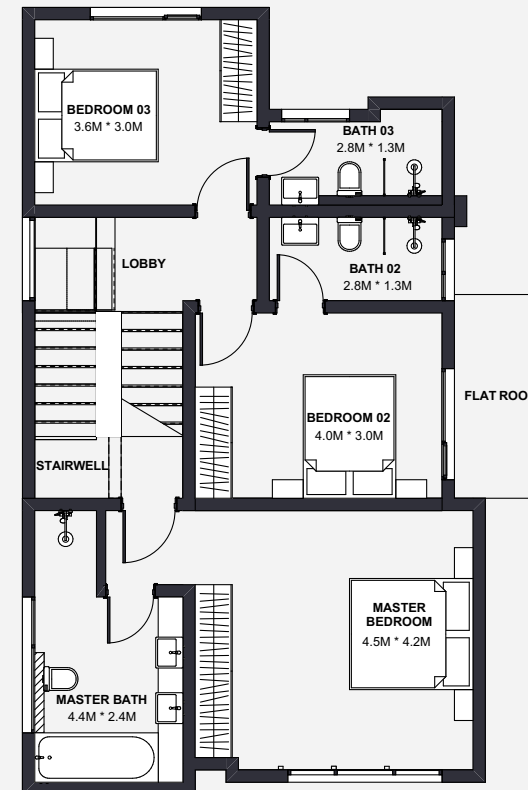
TYPE B

TYPE B

3 bedroom + DSQ , All Ensuite
Plinth Area 163 sq.m & Garden 59 sq.m

GROUND FLOOR

- Lounge with separate Dining area
- Semi fitted kitchen (Hob, Hood & Oven) with pantry
- Visitors cloak room
- Self contained DSQ
- Laundry Yard
- Private Parking for 3 cars
- Private backyard garden



FIRST FLOOR

- Bedroom 02 & 03 ensuite
- Master Ensuite

TYPE C

LUXURY

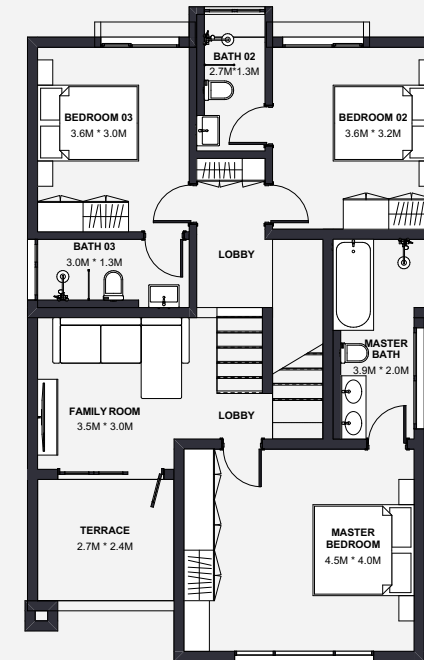
TYPE C (LUXURY)

3 bedroom + DSQ , All Ensuite

Plinth Area 168 sq.m, Terrace 7.8 sq.m & Garden 121 sq.m

GROUND FLOOR

- Lounge with separate Dining area
- Semi fitted kitchen (Hob, Hood & Oven) with pantry
- Visitors cloak room
- Self contained DSQ
- Laundry Yard
- Private Parking for 3 cars
- Private backyard garden

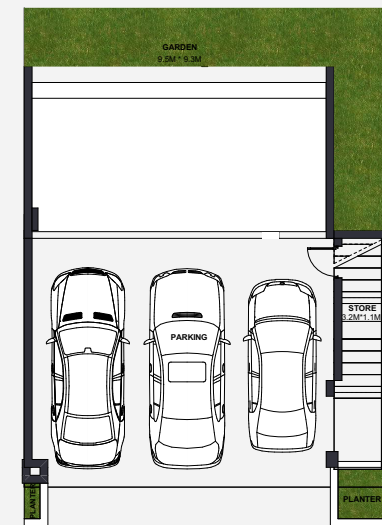


FIRST FLOOR

- Bedroom 02 & 03 ensuite
- Master bedroom ensuite
- Family room
- Terrace



- Parking Level



TYPE D

STANDARD

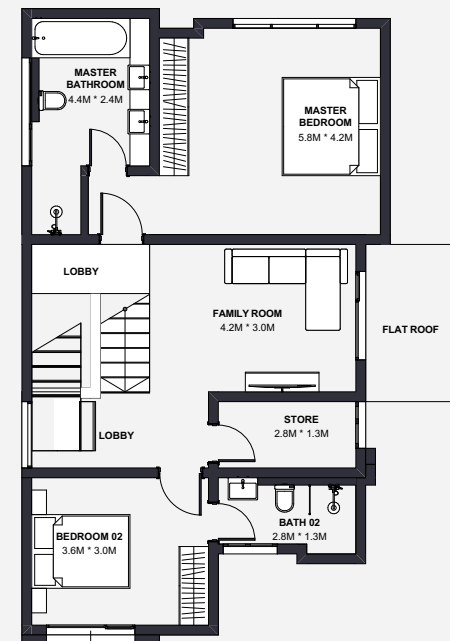
TYPE D (STANDARD)

4 bedroom + DSQ , All Ensuite

Plinth Area 210 sq.m & Garden 74 sq.m

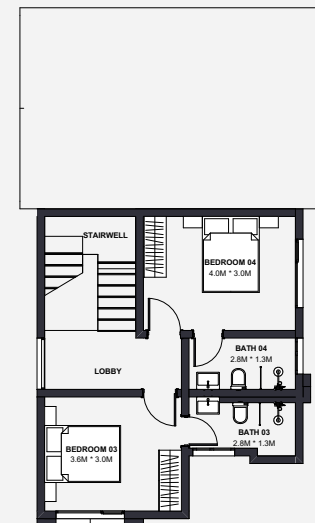
GROUND FLOOR

- Lounge with separate Dining area
- Semi fitted kitchen (Hob, Hood & Oven) with pantry
- Visitors cloak room
- Self Contained DSQ
- Laundry Yard
- Private Parking for 3 cars
- Private backyard garden



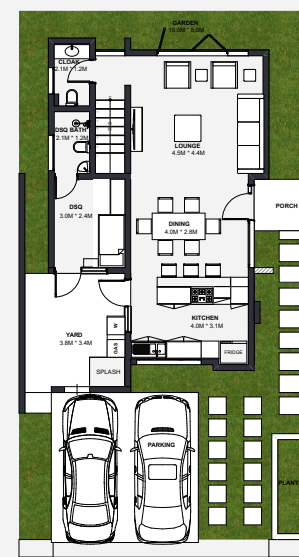
FIRST FLOOR

- Bedroom 02 ensuite
- Master bedroom ensuite
- Family room
- Storage area



SECOND FLOOR

- Bedroom 03 & 04 ensuite

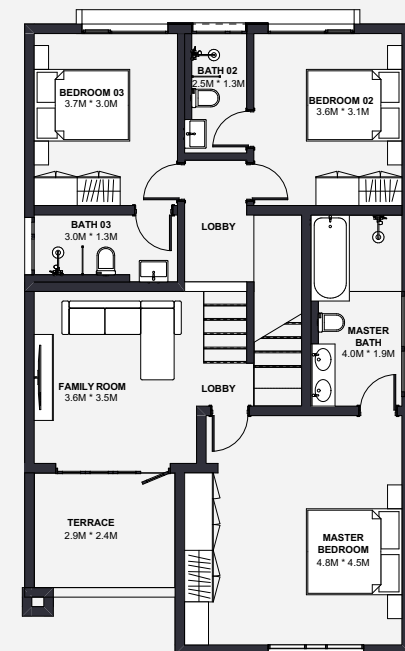


TYPE E

TYPE E

4 bedroom + DSQ , All Ensuite

Plinth Area 192 sq.m, Terrace 8.7sq.m & Garden 124 sq.m



GROUND FLOOR

- Lounge with separate Dining area
- Semi fitted kitchen (Hob, Hood & Oven) with pantry
- Guest bedroom ensuite
- Visitors cloak room
- Laundry Yard
- Private Parking for 3 cars
- Private backyard garden



FIRST FLOOR

- Bedroom 02 & 03 ensuite
- Master bedroom ensuite
- Family room
- Terrace

- Parking Level



TYPE F

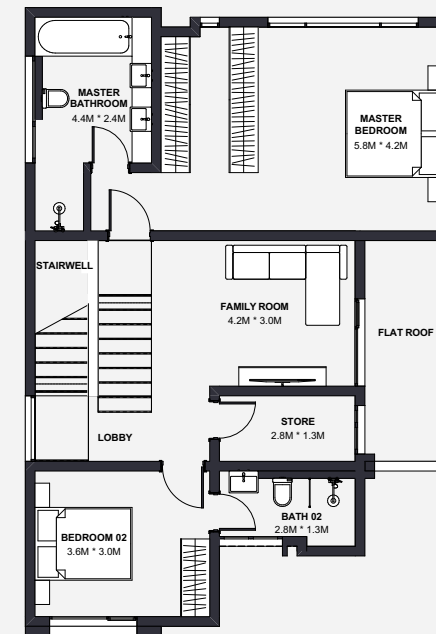
LUXURY



TYPE F (LUXURY)

4 bedroom + DSQ , All Ensuite

Plinth Area 242 sq.m. Terrace 36.4 sq.m & Garden 88 sq.m



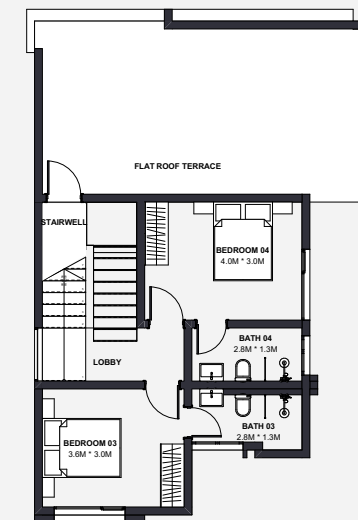
GROUND FLOOR

- Lounge with separate Dining area
- Semi fitted kitchen (Hob, Hood & Oven) with pantry
- Visitors cloak room
- Self contained DSQ
- Laundry Yard
- Private Parking for 3 cars
- Private backyard garden



SECOND FLOOR

- Bedroom 03 & 04 ensuite
- Roof Terrace



FIRST FLOOR

- Bedroom 02 ensuite
- Master bedroom ensuite
- Family Room
- Storage Area

INTERIORS



Lounge Type A



Lounge Type D



Living Space Type F



Kitchen Type D



Lounge Type E



Family Room Type F



Bedroom Type F



Bedroom Type A

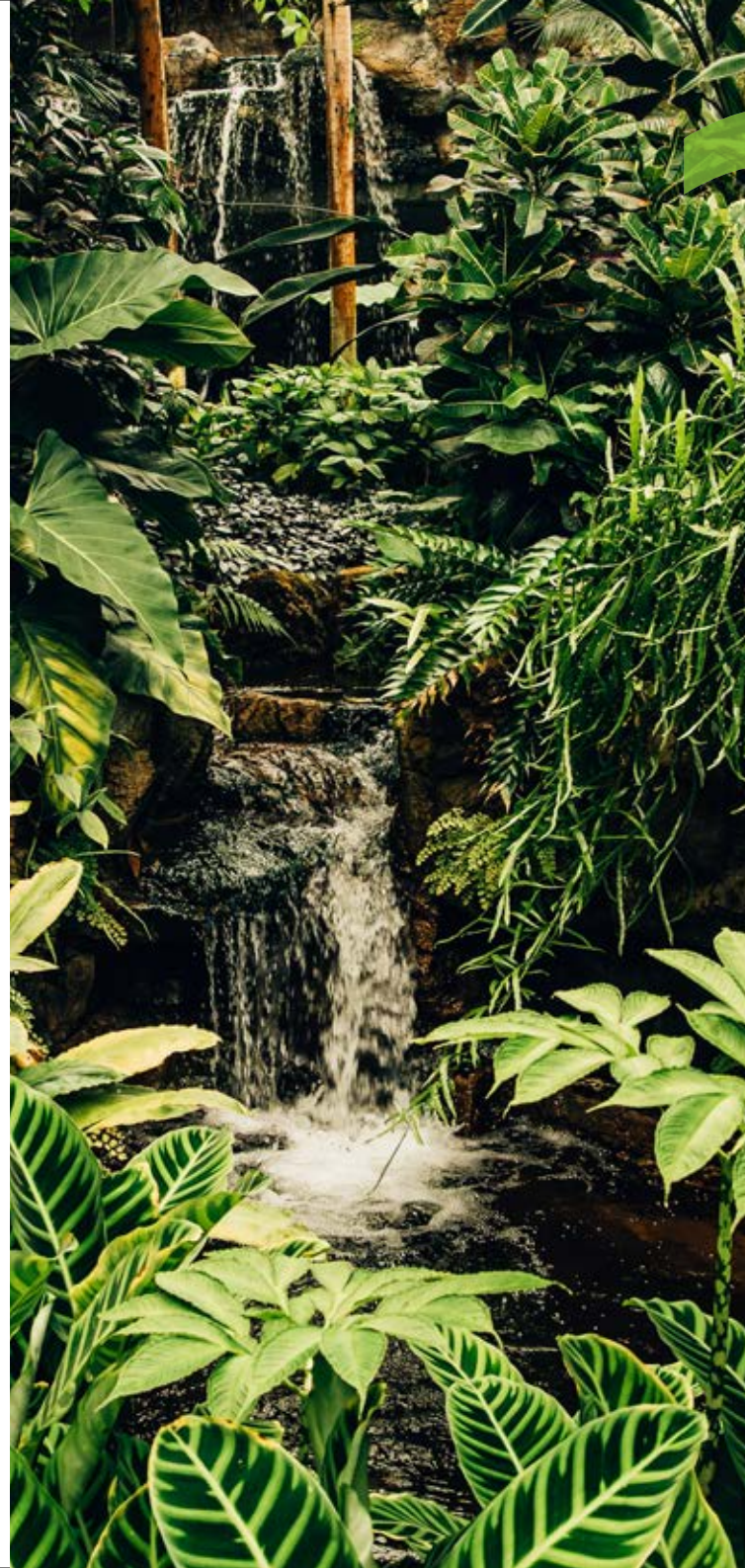
INTERIORS

the timeless

JOYS OF FAMILY

& NATURE

Settle in The Mist, an idyllic home teeming with bliss to guarantee you and your loved ones endless joy as you relish the comfort that living in oneness with nature offers.



a perfect

BALANCE

WITH NATURE





THE MIST

@ T I L I S I

Chigwell Holdings Ltd, 4th Floor, Maksons Plaza
Parklands Road - Westlands
Mobile: 0700 000 802 / 0731 888 111
Email: info@chigwell.co.ke
Website : www.chigwellholdings.com